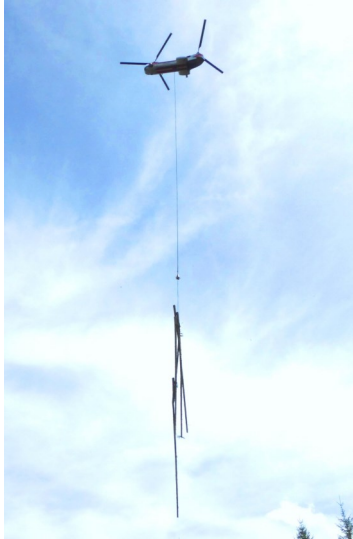


# ASHLAND FOREST RESILIENCY STEWARDSHIP PROJECT 2015 / 2016 Helicopter Thinning



## This Winter & Spring in the Ashland Watershed

Ecological restoration crews will remove crowded trees on 1,200 acres to improve forest health, sustain large old trees, and reduce the risk of damaging wildfire in the Ashland Watershed, source of the City's drinking water. Helicopter removal, while expensive, is the lowest impact method available to protect fragile soils.

## Trail Closures Begin December 8<sup>th</sup> for Public Safety

Ecological thinning of trees will begin December 8th. A helicopter will start working in the Lamb Saddle area in mid-December following tree thinning. Work will take place 7 days a week, weather permitting, in order to minimize closures and interruptions. On weekdays, log trucks will drive slowly out of the watershed down Tolman Creek Road to Siskiyou and then out around the golf course to the freeway.

## Trails and Roads Closed December 8<sup>th</sup> to December 24<sup>th</sup>

- Toothpick, Catwalk, Marty's, Lamb Mine, and upper Caterpillar
- The 2060 road at the Caterpillar Trail crossing between White Rabbit and Four Corners.
- Road access to Four Corners at the 2080-600 road junction.

## Trails Closed on December 8<sup>th</sup> until further notice

- Upper and Lower Eastview Trail on the 2080 road (upper Tolman)

Thank you for your ongoing patience. We realize that the project impacts the quiet of town, and opportunities to get out and enjoy our forests, and we appreciate the community's ongoing tolerance so that the work can continue. **All trails and roads on the west side of the watershed (Granite Street access) will be open until further notice.**

## For More Information

Updates posted at [www.ashlandwatershed.org](http://www.ashlandwatershed.org) and [www.facebook.com/AFR.Project](http://www.facebook.com/AFR.Project). To receive emailed updates, join the email list by clicking the "Notify Me" button located on the left side of the website homepage. For additional questions, contact:

### Lomakatsi Restoration Project

Alicia Fitzgerald  
[info@lomakatsi.org](mailto:info@lomakatsi.org)  
(541) 488-0208

### City of Ashland Forestry Division

Chris Chambers  
[champerc@ashland.or.us](mailto:champerc@ashland.or.us)  
(541) 552-2066

